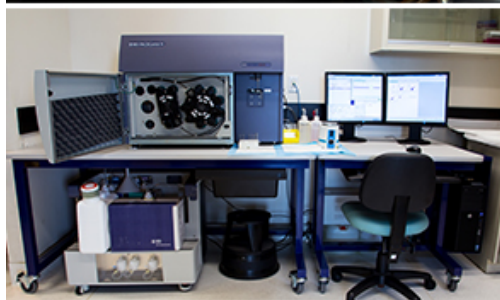
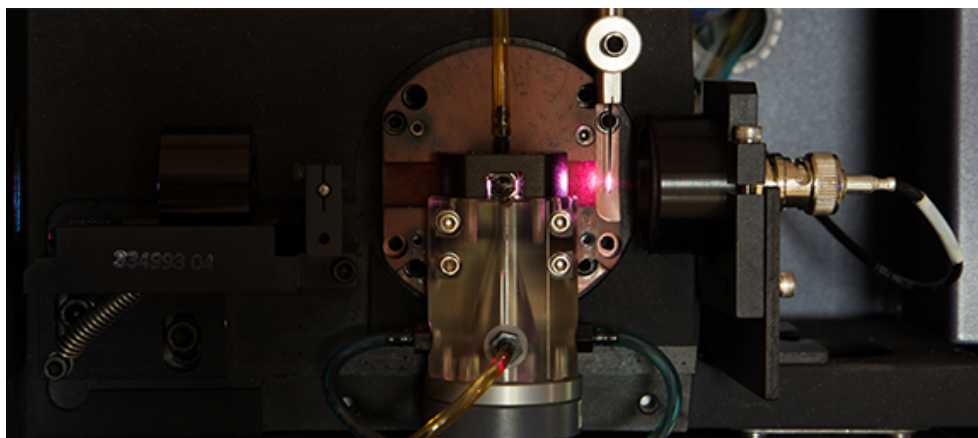


Instrument Specification & Optical Configuration

BD FACSCanto II

The BD FACSCanto II is a robust clinical grade 8-parameter, 6-color flow cytometer. Its gel-coupled cuvette design allows sensitive, accurate and quantitative measurements of fluorescence. This instrument has been the workhorse of clinical flow cytometry for the past decade. Its optics and fluidics are rock solid. It is equipped with 2 excitation lasers: 20mW 488nm blue, and 17mW 633nm red. Please find the default configuration of the FACSCanto II below.



What is it?

Digital flow cytometer

What can it to?

Flow cytometry analysis

Detect 8 parameters; 6 colors

2 excitation lasers

- 20mW 488nm blue

- 17mW 633nm red

What can be run?

BSL I samples

Customization?

Interchangeable filters

Who can run these instruments?

Technical assistance by facility staff

Trained users

How do I book these instruments?

LDI Core Booking Calendar

Where are they located?

Jewish General Hospital

3999 Cote-Ste-Catherine

LDI, Segal Cancer Center

Room E-417

BD FACSCanto II Optical Configuration

Laser #	Excitation Lasers		Dichroic	Filter	Common Fluorochromes and Dyes	Filter Position
1	488 nm	(Blue)	502LP	530/30	CFSE, FITC, AF488, GFP, YFP	E
1	488 nm	(Blue)	556LP	585/42	PE, PI, RFP	D
1	488 nm	(Blue)	610LP	N/A	N/A - no detector	C
1	488 nm	(Blue)	655LP	670LP	PerCP, PE-Cy5, 7AAD	B
1	488 nm	(Blue)	735LP	780/60	PE-Cy7	A
4	640 nm	(Red)	N/A	660/20	APC, Alexa 647, Cy5, Sytox Red	C
4	640 nm	(Red)	685LP	N/A	N/A - no detector	B
4	640 nm	(Red)	735LP	780/60	APC-Cy7, Alexa 750, APC-H7	A